


# Interstate Business Park

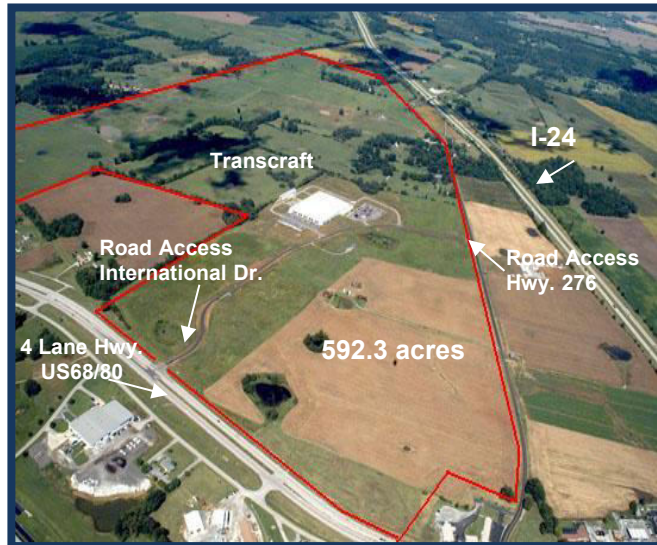
## 489 International Drive - Cadiz, Kentucky

(36° 52' 53.962"N 87° 44' 58.478"W)

In order to meet your project needs, Trigg County, Kentucky offers the Cadiz-Trigg County Interstate  Industrial Park consisting of 592 prime acres within one mile of I-24 and a population base of 427,269 within a 40-mile radius.

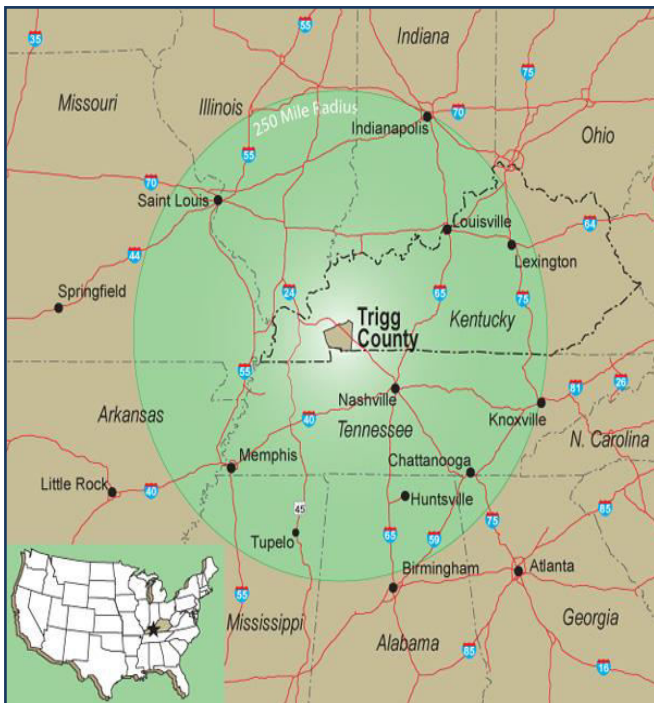
### SITE ATTRIBUTES

- \* 592.3 total acres
- \* 120.5 acres zoned industrial & owned by Cadiz-Trigg County Industrial Foundation
- \* 471.8 acres optioned by Trigg County Industrial Foundation
- \* Gently rolling topography from 510' to 530'
- \* 4-inch gas line to site
- \* 10-inch water line to site
- \* 8-inch sewer line to site
- \* Three-phase underground
- \* Phase 1 Environmental Report available
- \* Technically skilled workforce



\* **Certified "KY Work Ready Community"**

### SITE ACCESS



- \* Adjacent to US Hwy 68/KY Hwy 80 (four lane)
- \* Within 1 mile of Interstate 24
- \* 93 miles to Nashville International Airport
- \* 17 miles to Eddyville Riverport
- \* Population base of 427,269 within a 40-mile radius
- \* Labor force base of 202,745 within a 40-mile radius
- \* Within 250 miles of major markets:

Chattanooga, TN	Louisville, KY
Huntsville, AL	Memphis, TN
Indianapolis, IN	Nashville, TN
Knoxville, TN	St. Louis, MO
Lexington, KY	Tupelo, MS

- \* **Part of a 289,00 MSA**
- \* Within 40 miles of 2 universities and 2 community college campuses



**Sharon Butts - Associate Director**  
**South Western Kentucky Economic Development Council**  
 2800 Ft. Campbell Blvd.  
 Hopkinsville, KY 42240  
 270-885-1499 (or) 270-350-2014  
 Email: [sbutts@southwesternky.com](mailto:sbutts@southwesternky.com)  
[www.southwesternky.com](http://www.southwesternky.com)

