

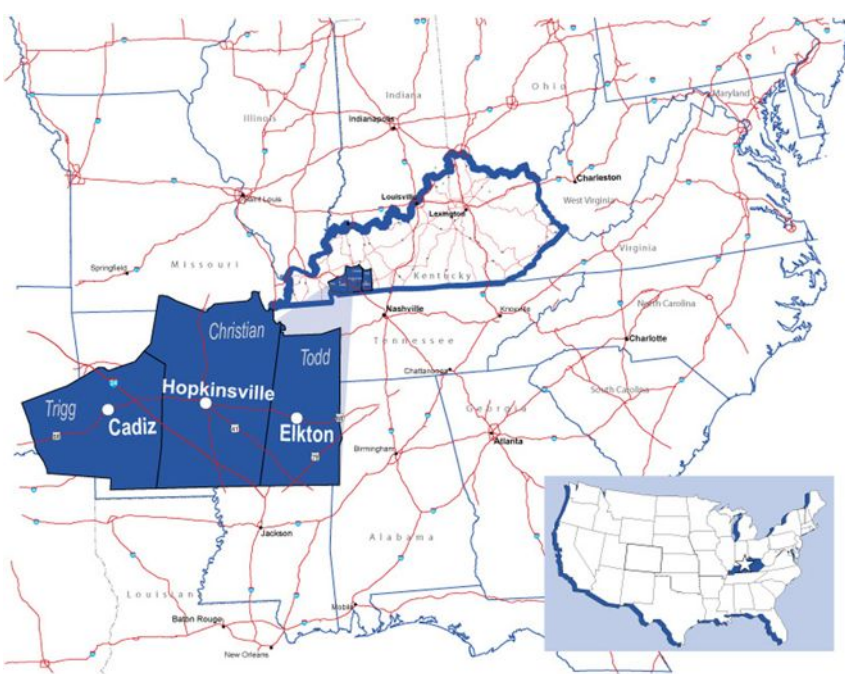
REGIONAL PROFILE

CHRISTIAN, TODD & TRIGG COUNTY, KENTUCKY

2011~2012



WWW.ALMOSTNASHVILLEKY.COM



LOCATION



is centrally located just north of the Kentucky Tennessee border. This three county Kentucky region consists of Christian, Todd and Trigg Counties. The Almost Nashville KY region sits within a day's drive of the majority of U.S. cities, is encompassed with an extensive highway network including I-24, and is located within 50 miles of the Nashville metropolitan area.

EDUCATION



	Schools	Teachers	Enrolled	Teacher/ Pupil Ratio
Secondary				
Elementary	13	405	6065	1:15
Intermediate	1	34	454	1:13
Middle School	5	186	2909	1:16
High School	4	253	3693	1:15
Parochial & Private	3	83	881	1:11
Career & Technical Center		8	425	
Hopkinsville Community College & Regional Technology Center		193	3,867	
Murray State University		36	500	
Brown Mackie College		28	249	

CLIMATE



Temperature	January	July
Average	32 F	78 F
High	73 F	94 F
Low	22 F	65 F
Annual Average Rainfall		51 in.
Annual Average Snowfall		12 in.

POPULATION



	2010	2000	1990	1980	1970
Christian County	73,955	72,265	68,941	66,878	56,224
Todd County	12,460	11,946	10,940	11,874	10,823
Trigg County	14,339	12,597	10,361	9,384	8,620
MSA*	273,949	232,000	189,279	168,269	134,884
Labor Market Area**	720,637	619,226	524,650	481,135	385,226

* Includes Christian and Trigg (KY), Montgomery and Stewart (TN) counties.

** MSA counties plus Caldwell, Calloway, Hopkins, Logan, Lyon, Marshall, Muhlenberg, and Todd counties (KY) and Robertson, Stewart, Sumner counties (TN).

LABOR ANALYSIS



Labor Force	
Christian County	29,826
Todd County	5,550
Trigg County	6,389
7 contiguous KY Counties	91,877
4 contiguous TN Counties	192,760
Total	326,402

GOVERNMENT



Christian County / Hopkinsville — County Seat

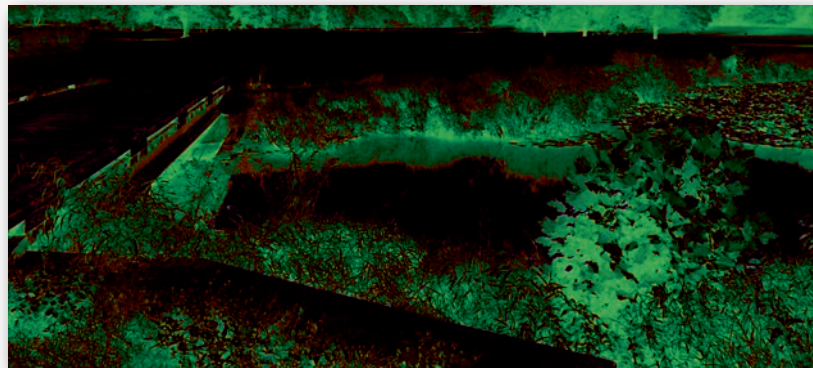
Mayor and 12 Council Members	
Judge Executive and 8 Magistrates	
Hopkinsville Police Dept.	79
Christian County Sheriff Dept.	45
Hopkinsville Fire Dept.	75
Public Works	34
Christian County Volunteer Fire	8 Districts
City Fire Insurance Rating	4

Todd County / Elkton — County Seat

Mayor and 6 Council Members	
Judge Executive and 5 Magistrates	
Elkton Police Dept.	6
Todd County Sheriff Dept.	10
Todd County Volunteer Fire	7 Districts
Fire Insurance Rating	7

Trigg County / Cadiz — County Seat

Mayor and 6 Council Members	
Judge Executive and 7 Magistrates	
Cadiz Police Dept.	9
Trigg County Sheriff Dept.	8
Trigg County Volunteer Fire Dept.	9 Districts
Fire Insurance Rating	7



Pennyrile Forest State Resort Golf Course

COMMUNICATIONS



Daily Newspaper (Locally Owned)	Kentucky New Era
Weekly Newspaper	Cadiz Record Todd County Standard
Radio	
WCVQ 107.9 FM	Adult Contemporary
WEGI 94.3 FM	Classic Hits
WEKT - AM	Gospel
WHOP 1230 AM/98.7 FM	Adult Contemporary
WHVO 1480 AM	Oldies
WKFN 540 AM	Sports Talk
WKDZ 106.5 FM	Country
WJQI 1370 AM	Religious
WKNJ 89.3 FM	Religious
WSPT 93.5 FM	Religious
WVVR 100.3 FM	Country
WZZP 97.5 FM	Rock
Television Stations	WKAG HCC-TV

Information & Communications Technology

AT&T	Local service and access, Local based installation and repair, 24 hour 7 day availability of repair, DS1 and DS3 high-speed digital data services, ISDN for voice, data/video, network design assistance.
EnergyNet	HES Fiber Optic Network providing Internet and point to point access, Wireless Internet Access, Residential Internet Access, Web Hosting, E-Mail, Spam and Virus filtering, Off-site Data Storage Facility, Server Co-location, Point to Point T-1, 10/100/1000 meg Ethernet point to point, Network Consulting Support: 24 hour x 7 day local Technical Support.
Mediacom	Digital and HD TV High speed internet
NewWave Communications	Digital and HD TV High speed internet

FINANCIAL INSTITUTIONS



Bank of Cadiz	4
BB&T	6
Elkton Bank and Trust	4
FNB Bank	2
Fort Campbell Federal Credit Union	5
Heritage Bank	5
Midwest Federal Credit Union	1
Planters Bank	3
Reliable Federal Credit Union	1
U.S. Bank	4
United Southern Bank	7
Other Financial Institutions	20
Total	62



Jennie Stuart Medical Center



benefits from the proximity to Nashville because of the partnerships with Vanderbilt University Medical Center, St. Thomas Hospital and Baptist Hospital. Air Evac provides service to these institutions when services are not available locally.

MEDICAL



Hospitals and Clinics

Christian County Health Dept.	
Convenient Care	
Helpings Hands Health Clinic	
Henry Bell Clinic	
Jennie Stuart Medical Center	194 beds
JSMC Ambulatory Surgery Campus	
Trover Clinic	
Trigg County Hospital	25 beds
Western State Psychiatric Hospital	396 beds
Long Term Care, Mental Health & Retirement Facilities	18
Doctors	172
Dentists	27

UTILITIES



Electricity

Christian County	Pennyrile Electric
Hopkinsville	Hopkinsville Electric System
Todd County	Pennyrile Electric
Trigg County	Pennyrile Electric
Supplier	Tennessee Valley Authority

Water

Hopkinsville	HWEA
Maximum daily capacity	15,000,000
Peak Load	13,500,000
Storage Capacity	8,000,000
Christian County	Christian County Water District
Maximum daily capacity	3,500,000
Peak Load	1,786,000
Storage Capacity	1,852,000
Todd County	Logan Todd Water
Maximum daily capacity	10,000,000
Average daily use	4,515,119
Storage capacity	7,000,000
Trigg County	Trigg County Water
Treatment Capacity	864,000
Average Daily Use	523,723

Wastewater

Hopkinsville - Christian County	6,000,000 excess capacity 2 Locations; tertiary treatment
Cadiz - Trigg County	314,000 excess capacity
Elkton - Todd County	260,000 excess capacity

Natural Gas

Distributor	Atmos Energy
Supplier	Williams Energy



Water Tower

TRANSPORTATION



US Highways	US 41, US 41A, US 68, and US 79
Interstate Highways	I-24
Parkways	Edward T. Breathitt (Pennyrile) Parkway Wendell H. Ford (Western KY) Parkway
Railroads	CSX Transportation Systems
Main Line	Freight, switching and siding space RJ Corman
Short Line	Service Center, Guthrie
Motor Freight Carriers	More than 100 motor freight lines are certified to serve the area.
River Ports	Eddyville River Port - Cumberland River Clarksville River Terminal-Cumberland River
Airports	Hopkinsville-Christian Co. Airport Fuel Jet A Truck, Jet A and Avgas 24 hour self-serve & maintenance, Hangars, 5502' x 100' Runway & IFR Equipped — Localizer, NDB, FBO - Elite Aviation
Smith Broadbent Airport-Lake Barkley	Jet A and low lead fuel, 4800' runway
Clarksville Airport	Jet A and low lead fuel, 4000' runway and 6000' runway
Charter Service	Scenic, flight instruction, and rental 4000'
Commercial	Nashville International Airport (One hour via Interstate 24) 400 daily flights
Parcel Service	Airborne Express Express Mail Federal Express The UPS Store United Parcel Service



Wal-Mart DC



Air Assault School

FORT CAMPBELL, KY



Fort Campbell is home to the 101st Airborne Division (Air Assault), 160th Special Operations Aviation Regiment (SOAR) and the 5th Special Forces Group.

A total of 30,000 troops and 53,000 family members call Fort Campbell home. Because of these fine soldiers and their families, more than \$2.9 billion dollars in annual disbursements impact the region every year. Another staggering statistic highlighting the region is that 61% of the soldiers at Fort Campbell desire to remain in area. These individuals represent personnel with skills, discipline, leadership, loyalty, and a strong work ethic. With approximately 3,200 soldiers separating from Ft. Campbell each year, quality organizations have the ability to make staffing their operations much easier.

CONVENTION CENTER



James E. Bruce Convention Center

303 Conference Center Drive
Hopkinsville, KY 42240
800.452.3836 or (270) 707-7000
Email: info@bruceconventioncenter.com
Website: www.bruceconventioncenter.com

Size	Over 30,000 sq. ft. of meeting and exhibition space
Meetings	Can accommodate from 10-2,000 guests
Banquets	Small receptions to gala dinners for 1,500
Events	From corporate meetings, tradeshows, and events to wedding receptions and private functions

MAJOR EMPLOYERS



Education

Christian County Schools	1,326
Todd County Schools	450
Trigg County Schools	350
Hopkinsville Community College	341
Murray State University Satellite Campus - Hopkinsville	36

Manufacturing / Distribution

Wal-Mart DC	842
Martinrea	568
T.RAD	365
U.S. Smokeless Tobacco	352
TGASK	349
Metalsa	333
Grupo Antolin	250
Transcraft	230
Ebonite	221
Stone Plastics	137
Koppers	125
Refine Tile	75

Service and Retail

Wal-Mart (Hopkinsville)	410
Wal-Mart (Oak Grove)	275
Lake Barkley State Resort Park	157
Kroger	108
Food Lion	38

Government

Fort Campbell Army Post	
Soldiers	30,438
Civilian	8,058
Christian County Government	193
Hopkinsville City Government	215
Todd County Government	106
Trigg County Government	45
Cadiz City Government	36
Elkton City Government	46

Healthcare

Jennie Stuart Medical Center	808
Western State Hospital	757
Pennyroyal Center	400
Trigg County Hospital	155
Hearthstone Place	103

AREA ATTRACTIONS



- Lake Barkley State Resort Park**
 Cadiz, Kentucky
 (270) 924-1131 • <http://parks.ky.gov/findparks/resortparks/lb/>
-
- Land Between the Lakes**
 20 miles west of Hopkinsville on Highway 68/80
 (270) 924-2000 • www.lbl.org
-
- Lake Malone State Park**
 Dunmore, KY
 (270) 657-2111 • www.LakeMalone@KY.gov
-
- Fort Campbell Memorial Park (Gander Memorial Park)**
 Fort Campbell Boulevard/41A at Pennyriple Parkway, Hopkinsville, KY
-
- Janice Mason Art Museum**
 Cadiz, Kentucky
 270-522-9056 • jmam.org
-
- Jefferson Davis Monument State Historic Site**
 9 miles east of Hopkinsville on US 68, Fairview, KY
 (270) 886-1765 • <http://parks.ky.gov/findparks/histparks/jd/>
-
- Pennyroyal Area Museum**
 217 E Ninth Street, Hopkinsville, KY
 (270) 887-4270
-
- Pennyriple Forest State Resort Park**
 20 miles northwest of Hopkinsville on KY 109N
 (270) 792-3421 • <http://parks.ky.gov/findparts/resortparks.pf>
-
- Robert Penn Warren Birthplace**
 Third and Cherry Street, Guthrie, KY • robertpennwarren.com
-
- Trail of Tears Commemorative Park**
 US 41 (Pembroke Road), Hopkinsville, KY
 (270) 886-8033 • www.trailoftears.org
-
- Tie Breaker Family Aquatic Center**
 9503 Eagle Way Bypass, Hopkinsville, KY
 (270) 890-0730 • www.tiebreakerpark.com
-
- Veteran's Cemetery**
 5817 Ft. Campbell Blvd., Hopkinsville, KY
 (270) 707-9653

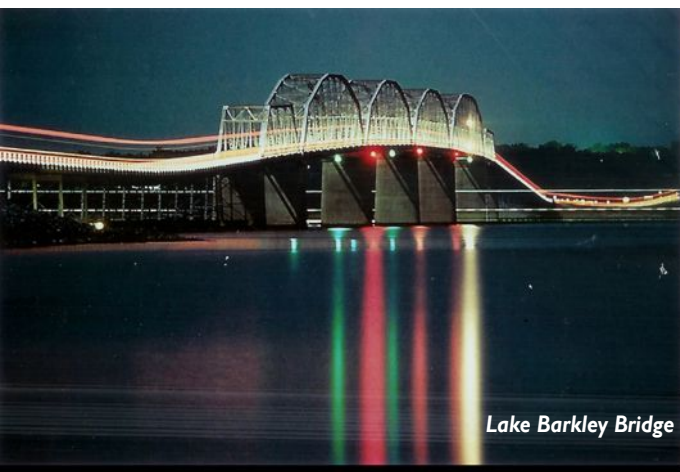


Jefferson Davis Monument

TAXES



Property	Rate per \$100 valuation based on 100% market value	
Kentucky Property Tax	\$ 0.122	
Kentucky Retail Sales Tax	6.0% state tax	0.0% City
Kentucky Income Tax	2.0% - 7.5%	
	Inside City	Outside City
Hopkinsville	\$ 0.236	\$ 0.0
Christian County	\$ 0.174	\$ 0.174
Christian County School	\$ 0.379	\$ 0.379
Occupational Tax Rate	1.95%	\$ 0.0
Cadiz	\$ 0.261	\$ 0.0
Trigg County	\$ 0.191	\$ 0.191
Trigg School Tax Rate	\$ 0.459	\$ 0.459
Occupational Tax Rate	1.5%	\$ 0.0
Elkton	\$ 0.249	\$ 0.249
Todd County	\$ 0.204	\$ 0.204
Todd County School	\$ 0.353	\$ 0.353
Occupational Tax Rate	1.5%	1.0%



Lake Barkley Bridge

For the most recent information about the Almost Nashville, KY region please visit www.almostnashvilleky.com

2800 Fort Campbell Blvd | Hopkinsville, KY 42240
 p. (270) 885-1499 f. (270) 886-2059